



---

## PROJECT INFORMATION

**Project Title:** Santa Fe Fireshed The Nature Conservancy  
**Project Type:** SPECIES LIST ONLY  
**Latitude/Longitude (DMS):** 35.691369 / -105.844800  
**County(s):** SANTA FE  
**Project Description:** The Nature Conservancy requested a species list for the Santa Fe Fireshed. Of particular interest are threatened and endangered species and SGCN.

---

## REQUESTOR INFORMATION

**Project Organization:** NGO CONSERVATION ORGANIZATION  
**Contact Name:** Virginia Seamster  
**Email Address:** virginia.seamster@state.nm.us  
**Organization:** New Mexico Department of Game and Fish  
**Address:** 1 Wildlife Way, Santa Fe NM 87507  
**Phone:** 5054768111

---

## OVERALL STATUS

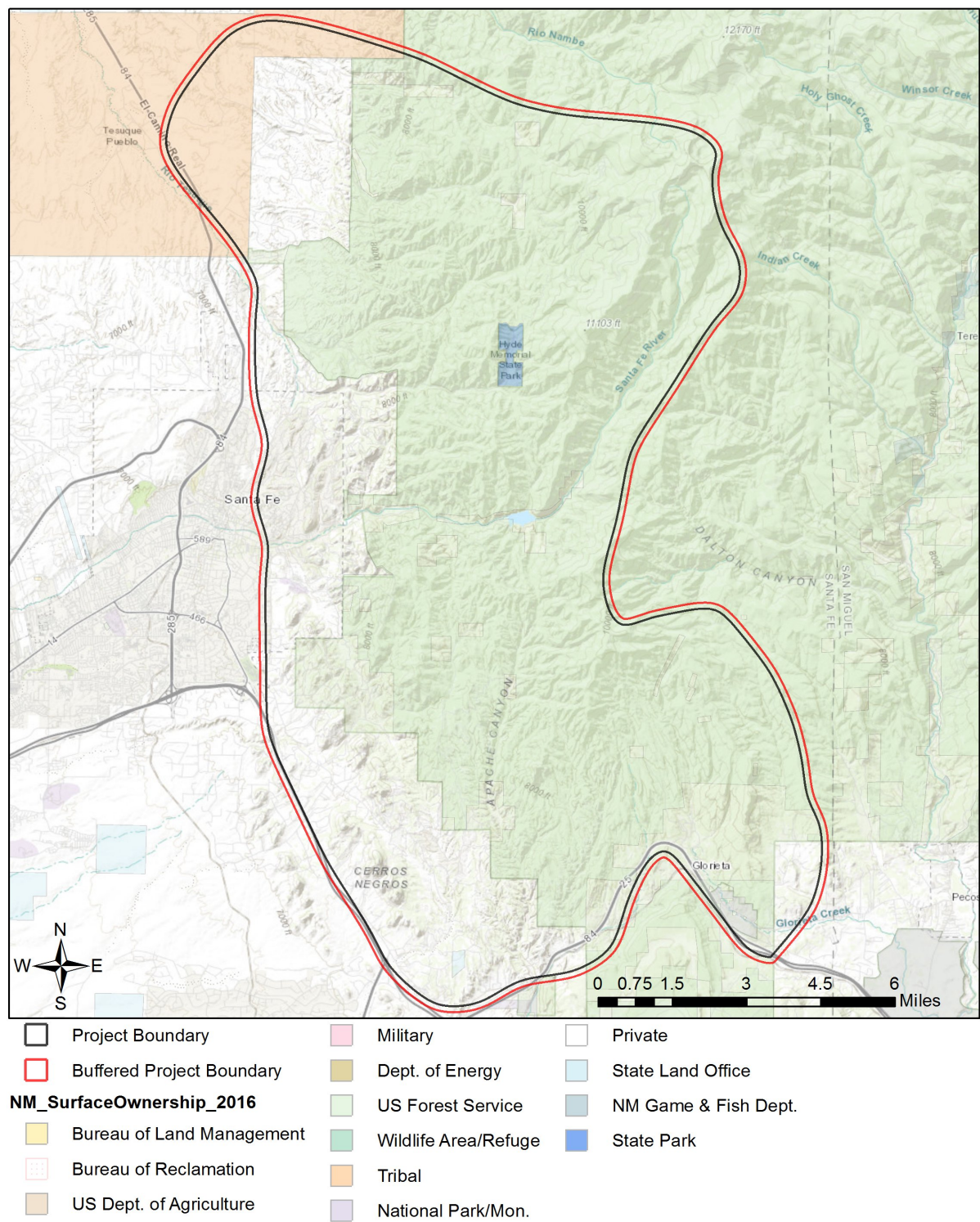
The information contained within this report comprises the recommendations of the New Mexico Department of Game and Fish (Department) for management and mitigation of proposed project impacts to wildlife and habitat resources. No further consultation with the Department is required.

### About this report:

- This environmental review is based on the project description and location that was entered. The report must be updated if the project type, area, or operational components are modified.
- This is a preliminary environmental screening assessment and report. It is not a substitute for the potential wildlife knowledge gained by having a biologist conduct a field survey of the project area. Federal status and plant data are provided as a courtesy to users. The review is also not intended to replace consultation required under the federal Endangered Species Act (ESA), including impact analyses for federal resources from the U.S. Fish and Wildlife Service (USFWS) using their [Information for Planning and Consultation tool](#).
- The New Mexico Environmental Review Tool (ERT) utilizes species observation locations and species distribution models, both of which are subject to ongoing change and refinement. Inclusion or omission of a species within a report can not guarantee species presence or absence at a precise point location, as might be indicated through comprehensive biological surveys. Specific questions regarding the potential for adverse impacts to vulnerable wildlife populations or habitats, especially in areas with a limited history of biological surveys, may require further on-site assessments.
- The Department encourages use of the ERT to modify proposed projects for avoidance, minimization, or mitigation of wildlife impacts. However, the ERT is not intended to be used in a repeatedly iterative fashion to adjust project attributes until a previously determined recommendation is generated. The ERT serves to assess impacts once project details are developed. The [New Mexico Crucial Habitat Assessment Tool](#) is the appropriate system for advising early-stage project planning and design to avoid areas of anticipated wildlife concerns and associated regulatory requirements.



# Santa Fe Fireshed The Nature Conservancy



Sources: Esri, HERE, Garmin, Intermap, increment P Corp., GEBCO, USGS, FAO, NPS, NRCAN, GeoBase, IGN, Kadaster NL, Ordnance Survey, Esri Japan, METI, Esri China (Hong Kong), swisstopo, © OpenStreetMap contributors, and the GIS User Community



### Special Status Animal Species within 200 Meters of Project Area

Common Name	Scientific Name	USFWS (ESA)	NMDGF (WCA)	NMDGF SGCN/SERI
<a href="#">Northern Leopard Frog</a>	<a href="#">Lithobates pipiens</a>			SGCN
<a href="#">Eared Grebe</a>	<a href="#">Podiceps nigricollis</a>			SGCN
<a href="#">American Bittern</a>	<a href="#">Botaurus lentiginosus</a>			SGCN
<a href="#">Bald Eagle</a>	<a href="#">Haliaeetus leucocephalus</a>		T	SGCN
<a href="#">Aplomado Falcon</a>	<a href="#">Falco femoralis</a>		E	SGCN
<a href="#">Peregrine Falcon</a>	<a href="#">Falco peregrinus</a>		T	SGCN
<a href="#">Mountain Plover</a>	<a href="#">Charadrius montanus</a>			SGCN
<a href="#">Long-Billed Curlew</a>	<a href="#">Numenius americanus</a>			SGCN
<a href="#">Mexican Spotted Owl</a>	<a href="#">Strix occidentalis lucida</a>	LT		SGCN
<a href="#">Mexican spotted owl Designated Critical Habitat</a>	<a href="#">CH for Strix occidentalis lucida</a>	Threatened		SGCN
<a href="#">Boreal Owl</a>	<a href="#">Aegolius funereus</a>		T	SGCN
<a href="#">Black Swift</a>	<a href="#">Cypseloides niger</a>			SGCN
<a href="#">Lewis's Woodpecker</a>	<a href="#">Melanerpes lewis</a>			SGCN
<a href="#">Red-Headed Woodpecker</a>	<a href="#">Melanerpes erythrocephalus</a>			SGCN
<a href="#">Williamson's Sapsucker</a>	<a href="#">Sphyrapicus thyroideus</a>			SGCN
<a href="#">Olive-Sided Flycatcher</a>	<a href="#">Contopus cooperi</a>			SGCN
<a href="#">Bank Swallow</a>	<a href="#">Riparia riparia</a>			SGCN
<a href="#">Pinyon Jay</a>	<a href="#">Gymnorhinus cyanocephalus</a>			SGCN
<a href="#">Clark's Nutcracker</a>	<a href="#">Nucifraga columbiana</a>			SGCN
<a href="#">Juniper Titmouse</a>	<a href="#">Baeolophus ridgwayi</a>			SGCN
<a href="#">Pygmy Nuthatch</a>	<a href="#">Sitta pygmaea</a>			SGCN
<a href="#">Western Bluebird</a>	<a href="#">Sialia mexicana</a>			SGCN
<a href="#">Loggerhead Shrike</a>	<a href="#">Lanius ludovicianus</a>			SGCN
<a href="#">Gray Vireo</a>	<a href="#">Vireo vicinior</a>		T	SGCN
<a href="#">Grace's Warbler</a>	<a href="#">Setophaga graciae</a>			SGCN
<a href="#">Brown-Capped Rosy-Finch</a>	<a href="#">Leucosticte australis</a>			SGCN
<a href="#">Cassin's Finch</a>	<a href="#">Haemorhous cassinii</a>			SGCN
<a href="#">Spotted Bat</a>	<a href="#">Euderma maculatum</a>		T	SGCN
<a href="#">American Pika</a>	<a href="#">Ochotona princeps</a>			SGCN
<a href="#">Gunnison's Prairie Dog</a>	<a href="#">Cynomys gunnisoni</a>			SGCN
<a href="#">Pacific Marten</a>	<a href="#">Martes caurina</a>		T	SGCN
<a href="#">Lilljeborg's Pea-Clam</a>	<a href="#">Pisidium lilljeborgi</a>		T	SGCN
<a href="#">Black Bear</a>	<a href="#">Ursus americanus</a>			SERI
<a href="#">Cougar</a>	<a href="#">Puma concolor</a>			SERI
<a href="#">Mule Deer</a>	<a href="#">Odocoileus hemionus</a>			SERI

ESA = Endangered Species Act, WCA = Wildlife Conservation Act, SGCN = Species of Greatest Conservation Need, SERI = Species of Economic and Recreational Importance



### Special Status Plant Species within 200 Meters of Project Area

Common Name	Scientific Name	USFWS (ESA)	NMAC	NMRPCS
<a href="#">Santa Fe Cholla</a>	<a href="#">Cylindropuntia viridiflora</a>		E	SS
<a href="#">Cyanic Milkvetch</a>	<a href="#">Astragalus cyaneus</a>			SS
<a href="#">Giant Helleborine Orchid</a>	<a href="#">Epipactis gigantea</a>			SS

NMAC = New Mexico Administrative Code, NMRPCS = [New Mexico Rare Plant Conservation Strategy](#), SS = NM Rare Plant Conservation Strategy Species

### Project Recommendations

This report includes a preliminary species list that may be used during early stages of project or conservation planning. Even if this report indicates that your proposed project location would require a custom review from a biologist, no review will be returned until additional project details are provided. To obtain a project review, please submit additional details regarding the type of project, project objectives, anticipated project duration, timing of project construction, the composition and dimensions/quantities of materials that will be utilized for project implementation, any equipment that will be used, anticipated ground disturbance that will occur, wildlife surveys or observations that have occurred on or near the project site, and any other relevant details regarding potential effects of project activities on wildlife or wildlife habitat. Photographs of the project site are especially useful.

Although this project report may include management recommendations based on the project location, additional conservation measures may be needed. The Department can not fully assess potential effects and associated management recommendations until a project type and description have been submitted, and an appropriate impact buffer for that project type has been applied. Also, the species list within this report represents an estimation of special status species that could be present at the site of a small-scale project. Species lists for projects that occur across broader geographic scales (e.g., one or more counties, multiple habitat types) are more appropriately obtained from the Department's Biota Information System of New Mexico ([BISON-M](#)) database. Species lists generated by the ERT may contain modeled species distributions in order to predict species occurrences within areas that lack previous wildlife inventories or surveys. This list can be refined using occurrence-based information within BISON-M regarding wildlife-habitat relationships and biological needs for species that might be present within the project footprint.

The proposed project occurs within or near a riparian area. Because riparian areas are important wildlife habitats, the project footprint should avoid removing any riparian vegetation or creating ground disturbance either directly within or affecting the riparian area. If your project involves removal of non-native riparian trees or planting of native riparian vegetation, please refer to the Department's habitat handbook guideline for [Restoration and Management of Native and Non-native Trees in Southwestern Riparian Ecosystems](#).





---

**Disclaimers regarding recommendations:**

- The Department provides technical guidance to support the persistence of all protected species of native fish and wildlife, including game and nongame wildlife species. Species listed within this report include those that have been documented to occur within the project area, and others that may not have been documented but are projected to occur within the project vicinity.
- Recommendations are provided by the Department under the authority of § 17-1-5.1 New Mexico Statutes Annotated 1978, to provide "communication and consultation with federal and other state agencies, local governments and communities, private organizations and affected interests responsible for habitat, wilderness, recreation, water quality and environmental protection to ensure comprehensive conservation services for hunters, anglers and nonconsumptive wildlife users".
- The Department has no authority for management of plants or Important Plant Areas. The [New Mexico Endangered Plant Program](#), under the Energy, Minerals, and Natural Resources Department's Forestry Division, identifies and develops conservation measures necessary to ensure the survival of plant species within New Mexico. Plant status information is provided within this report as a courtesy to users. Recommendations provided within the ERT may not be sufficient to preclude impacts to rare or sensitive plants, unless conservation measures are identified in coordination with the Endangered Plant Program.
- Additional coordination may also be necessary under the federal ESA or National Environmental Policy Act (NEPA). Further site-specific recommendations may be proposed during ESA and/or NEPA analyses, or through coordination with affected federal agencies.